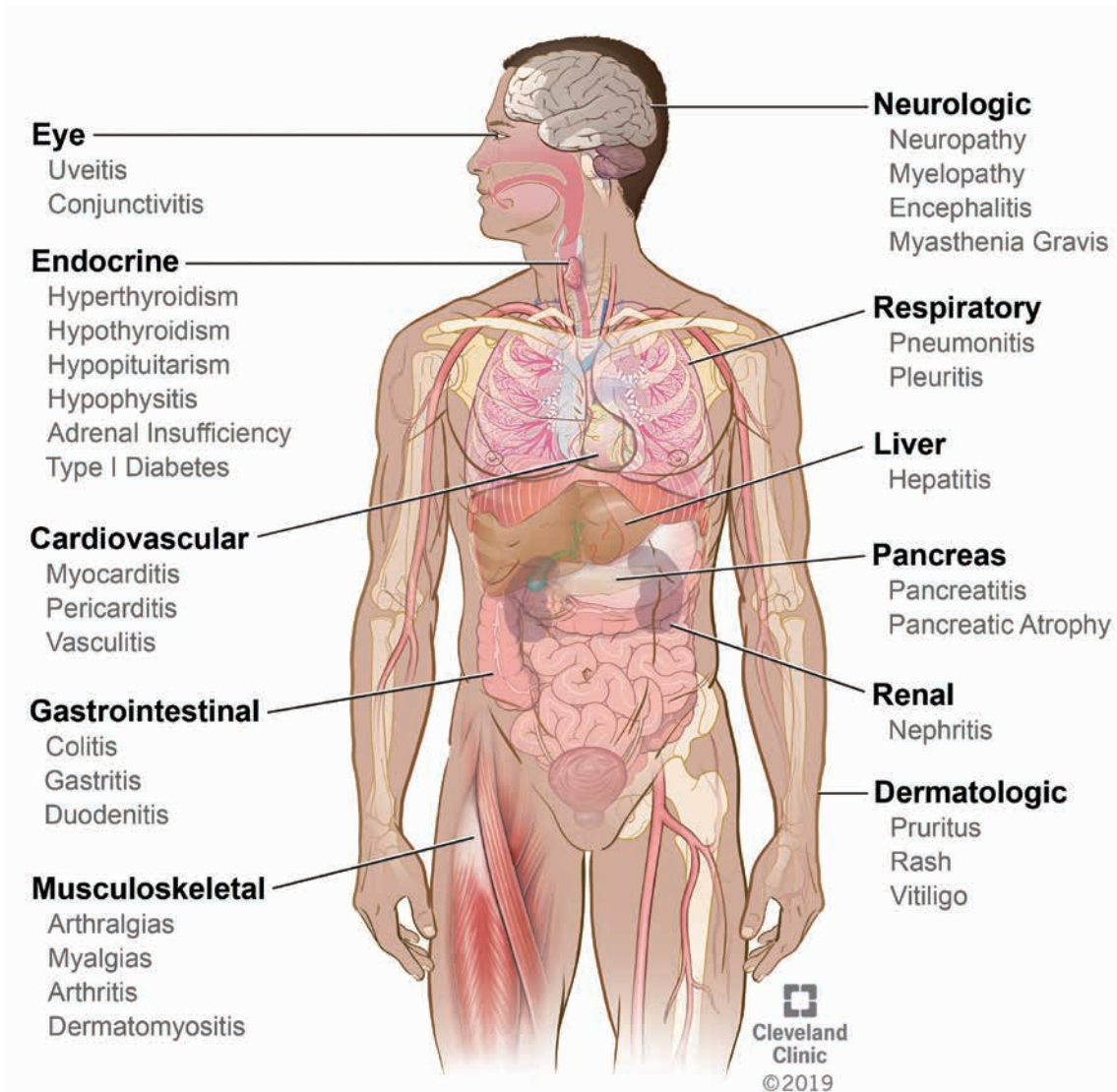


2nd Annual

Management of Checkpoint Inhibitor-Related Toxicity: Virtual Updates

Live stream

FRIDAY, MARCH 5, 2021



About the Course/Learning Objectives

Twelve immunotherapy agents have been approved since 2011 in a wide variety of cancers. Immune checkpoint blockade leads to a new spectrum of dysimmune toxicity requiring collaboration between oncologists, providers, and specialists to improve the understanding of the mechanism, diagnosis, and management of irAEs. The goal of the program is to bring together a multidisciplinary group of clinicians to share expertise and improve the care of patients receiving immune checkpoint inhibitor therapies.

Specialists in dermatology, endocrinology, gastroenterology, oncology, internal medicine, rheumatology/ immunology, nurses, nurse practitioners, physician assistants, and residents/ fellows are invited to attend.

As a result of attending this course, the participant will be able to:

- › Describe the mechanism of action associated with checkpoint inhibitor therapies.
- › Identify the spectrum of immune-related adverse events that can occur with immune checkpoint inhibitor therapies.
- › Implement assessment criteria, diagnostic testing, and interventions to improve early identification and management of immune-related AEs.
- › Recognize the importance and necessity of the multidisciplinary approach in treatment of immune-related adverse events.
- › Discuss emerging survivorship issues related to immune-related adverse events.

Accreditation

The Cleveland Clinic Foundation Center for Continuing Education is accredited by the Accreditation Council for Continuing Medical Education (ACCME) to provide continuing medical education for physicians.

The Cleveland Clinic Foundation Center for Continuing Education designates this live activity for a maximum of 4.25 *AMA PRA Category 1 Credits*[™]. Physicians should claim only the credit commensurate with the extent of their participation in the activity.

Participants claiming CME credit from this activity may submit the credit hours to the American Osteopathic Association Council for Continuing Medical Education credit for Category 2 credit.

The Ohio Board of Nursing will accept at face value the number of contact hours awarded for an educational activity that has been approved for CE by a nationally accredited system of CE approval.

Nurses are able to obtain CE that has been approved or provided by a nationally recognized accreditation system of continuing education.

Examples include:

- › The American Nurses Credentialing Center (ANCC)
- › The Accreditation Council for Continuing Medical Education (ACCME)
- › The International Association for Continuing Education and Training (IACET)

Faculty Listing

Course Co-Directors

Pauline Funchain, MD

Department of Hematology/ Medical Oncology
Cleveland Clinic

Laura S. Wood, RN, MSN, OCN

Department of Hematology/ Medical Oncology
Cleveland Clinic

Planning Committee

Cassandra M Calabrese, DO

Department of Rheumatologic and Immunologic Disease
Cleveland Clinic

Cleveland Clinic Faculty

Leonard Calabrese, DO

Department of Rheumatic and Immunologic Disease

Jean Ellsworth-Wolk, CNS

Fairview Hospital – Oncology Program

Bassam Estfan, MD

Department of Hematology/ Medical Oncology

Anthony Fernandez, MD, PhD

Department of Dermatology

Jessica Geiger, MD

Department of Hematology/ Medical Oncology

Abdo Haddad, MD

Department of Hematology/ Medical Oncology

Christina Lindenmeyer, MD

Department of Gastroenterology, Hepatology & Nutrition

Marisa McGinley, DO

Mellen Center

Ali Mehdi, MD

Department of Nephrology & Hypertension

Rohit Moudgil, MD, PhD

Department of Cardiovascular Medicine

Simon Mucha, MD

Department of Critical Care Medicine

Christian Nasr, MD

Department of Endocrinology, Diabetes and Metabolism

Moshe Ornstein, MD, MA

Department of Hematology/ Medical Oncology

Pradnya Patil, MD

Department of Hematology/ Medical Oncology

Jessica Philpott, MD, PhD

Department of Gastroenterology, Hepatology, and Nutrition

Christy Samaras, DO

Department of Hematology/ Medical Oncology

Sunil Srivastava, MD

Department of Ophthalmology

James Stevenson, MD

Department of Hematology/ Medical Oncology

Niroshan Thiruchelvam, MD

Department of Pulmonary Medicine

The Cleveland Clinic Center for Continuing Education Faculty Disclosure

Management of Checkpoint Inhibitor-Related Toxicity 03/05/2021

In accordance with the Standards for Commercial Support issued by the Accreditation Council for Continuing Medical Education (ACCME), The Cleveland Clinic Foundation Center for Continuing Education requires resolution of all faculty conflicts of interest to ensure CME activities are free of commercial bias.

The following faculty have indicated that they may have a relationship, which in the context of their presentation(s), could be perceived as a potential conflict of interest:

Anthony P Fernandez, MD	Abbvie Pharmaceuticals	Consulting Membership on advisory committee or review panels Teaching and Speaking
	Corbus Pharmaceuticals Mallinckrodt Inc.	Research / Independent Contractor Consulting Research / Independent Contractor Teaching and Speaking
	Novartis	Consulting Research / Independent Contractor Teaching and Speaking
	Pfizer, Inc. Bristol-Myers Squibb Co.	Research / Independent Contractor Consulting
Pauline Funchain, MD	Eisai	Consulting
	Pfizer	Research / Independent Contractor
Christina Lindenmeyer, MD	Merck & Co, Inc.	Author for Merck Manuals Hepatology Chapters: \$1045 / year Teaching and Speaking
Moshe Ornstein, MD	Merck Bristol-Myers Squibb Co.	Consulting Consulting Membership on advisory committee or review panels Teaching and Speaking
	Eisai	Consulting Teaching and Speaking
	Exelixis	Consulting Teaching and Speaking
	Pfizer	Consulting Teaching and Speaking
Sunil Srivastava, MD	Allergan Bausch and Lomb	Research / Independent Contractor Consulting Research / Independent Contractor
	Clearside Biomedical Novartis	Consulting Research / Independent Contractor

	Optos	Consulting
	Regeneron	Consulting
	Sanofi Aventis	Consulting
	Santen	Consulting
		Membership on advisory committee or review panels
	Zeiss Meditech	Consulting
James Stevenson, MD	Trizell Ltd	Membership on advisory committee or review panels
	EMD Serono, Inc.	Research / Independent Contractor
	Novocure	Membership on advisory committee or review panels
	Merck & Co, Inc.	Research / Independent Contractor
Laura Wood, RN	Bristol-Myers Squibb Co.	Teaching and Speaking
	Eisai	Consulting
	Merck	Teaching and Speaking
	Pfizer	Teaching and Speaking

The following faculty have indicated they have no relationship which, in the context of their presentation(s), could be perceived as a potential conflict of interest:

Cassandra Calabrese, DO
Leonard Calabrese, DO
Jean Ellsworth-Wolk, CNS
Bassam Estfan, MD
Jessica L. Geiger, MD
Abdo Haddad, MD
Marisa Patryce McGinley, DO
Ali Mehdi, MD
Rohit Moudgil, MD
Simon Mucha, MD
Christian Nasr, MD
Pradnya Patil, MD
Jessica Philpott, MD
Christy Samaras, DO
Niroshhan Thiruchelvam, MD

Commercial Support

The Cleveland Clinic Foundation Center for Continuing Education acknowledges educational grants for partial support of this activity from:

AstraZeneca Pharmaceuticals
Bristol-Myers Squibb Company

Disclaimer

The information in this educational activity is provided for general medical education purposes only and is not meant to substitute for the independent medical judgment of a physician relative to diagnostic and treatment options of a specific patient's medical condition. The viewpoints expressed in this CME activity are those of the authors/faculty. They do not represent an endorsement by the Cleveland Clinic Foundation. In no event will the Cleveland Clinic Foundation be liable for any decision made or action taken in reliance upon the information provided through this CME activity.

Faculty Presentations

Recorded faculty presentations will be made available online following this activity.

Agenda

Friday, March 5, 2021

8:00 am	Welcome/ Introduction <i>Pauline Funchain, MD</i> <i>Laura S. Wood RN, MSN, OCN</i>
SESSION # 1	COMMON BUT COMPLEX irAEs
MODERATOR:	<i>James Stevenson, MD</i>
8:05 am	Dermatologic irAEs <i>Anthony Fernandez, MD, PhD</i>
8:15 am	Endocrine irAEs <i>Christian Nasr, MD</i>
8:25 am	Case Presentations/Panel Discussion – Q & A <i>Drs. Fernandez & Nasr</i>
SESSION # 2	COVID and irAEs – A CHALLENGE FOR RHEUMATOLOGY
MODERATOR:	<i>Moshe Ornstein, MD</i>
8:40 am	KEYNOTE ADDRESS Lessons Learned from irAE Management During COVID-19 <i>Leonard Calabrese, DO</i>
8:55 am	Rheumatologic irAEs <i>Cassandra Calabrese, DO</i>
9:05 am	Case Presentations/ Panel Discussion – Q & A <i>Dr. L. Calabrese & Dr. C. Calabrese</i>
SESSION # 3	RECOGNITION OF TRICKY irAEs
MODERATOR:	<i>Jessica Geiger, MD</i>
9:20 am	Hematologic irAEs <i>Christy Samaras, DO</i>
9:30 am	Nephrologic irAEs <i>Ali Mehdi, MD</i>
9:40 am	Ophthalmologic irAEs <i>Sunil Srivastava, MD</i>
9:50 am	Case Presentations/Panel Discussion–Q&A <i>Drs. Samaras, Mehdi, and Srivastava</i>
10:05 pm	BREAK

SESSION # 4	BREATHING AND BEATING
MODERATOR:	<i>Pradnya Patil, MD</i>
10:25 am	Cardiologic irAEs <i>Rohit Moudgil, MD, PhD</i>
10:35 am	Pulmonary irAEs <i>Niroshhan Thiruchelvam, MD</i>
10:45 am	irAE Management in the ICU <i>Simon Mucha, MD</i>
10:55 am	Case Presentations / Panel Discussion – Q & A <i>Drs. Moudgil, Thiruchelvam, and Mucha</i>
SESSION # 5	BRAINS and GUTS
MODERATOR:	<i>Bassam Estfan, MD</i>
11:10 am	Neurologic irAEs <i>Marisa McGinley, DO</i>
11:20 am	Gastrointestinal irAEs <i>Jessica Philpott, MD, PhD</i>
11:30 am	Hepatologic irAEs <i>Christina Lindenmeyer, MD</i>
11:40 am	Case Presentations / Panel Discussion – Q & A <i>Drs. McGinley, Philpott, and Lindenmeyer</i>
SESSION # 6	SURVIVORSHIP
MODERATOR:	<i>Abdo Haddad, MD</i>
11:55 am	Long Term Sequelae & Survivorship <i>Jean Ellsworth-Wolk, CNS</i>
12:05 pm	Long-term irAEs & Long-term Steroid Use <i>Cassandra Calabrese, DO</i>
12:15 pm	Case Presentations / Panel Discussion – Q & A <i>J. Ellsworth-Wolk, CNS & Dr. C. Calabrese</i>
12:30 pm	Adjourn

Time for questions and answers are included in each session.

How to Obtain *AMA PRA Category 1 Credits*™ or Certificate of Participation:

***Note - The ability to claim CME credit will be available on Friday, March 12, 2021.**

1. Go to www.ccfme.org/cmelogin to begin the activity evaluation and print your certificate. You have 30 days following the activity to claim credit.
2. **New Users:** By attending this activity, an account has been created for you. Please follow these steps:
 - Enter email address used for registration.
 - Click on '**Reset Password**,' so you can create your own password.
 - Request password reset.

Existing Users:

- Enter email address used for registration.
 - Enter password.
3. Select, **Click here to Complete Evaluation** and complete all questions.
 4. Select the number of credits you are claiming by either using
 - (a) the drop-down
 - OR
 - (b) checking the box marked 'maximum available.'
 5. Click '**Save and View Certificate**.'
 6. Your official certificate will be displayed. Please print and keep with your permanent files. You may also access your account at any time to view and/or print CME certificates and transcripts.

** If you need assistance, contact the CME office at 216.444.9990 or myCME@ccf.org.

Organizer:



Copyright © 2021 The Cleveland Clinic Foundation. All Rights Reserved.